

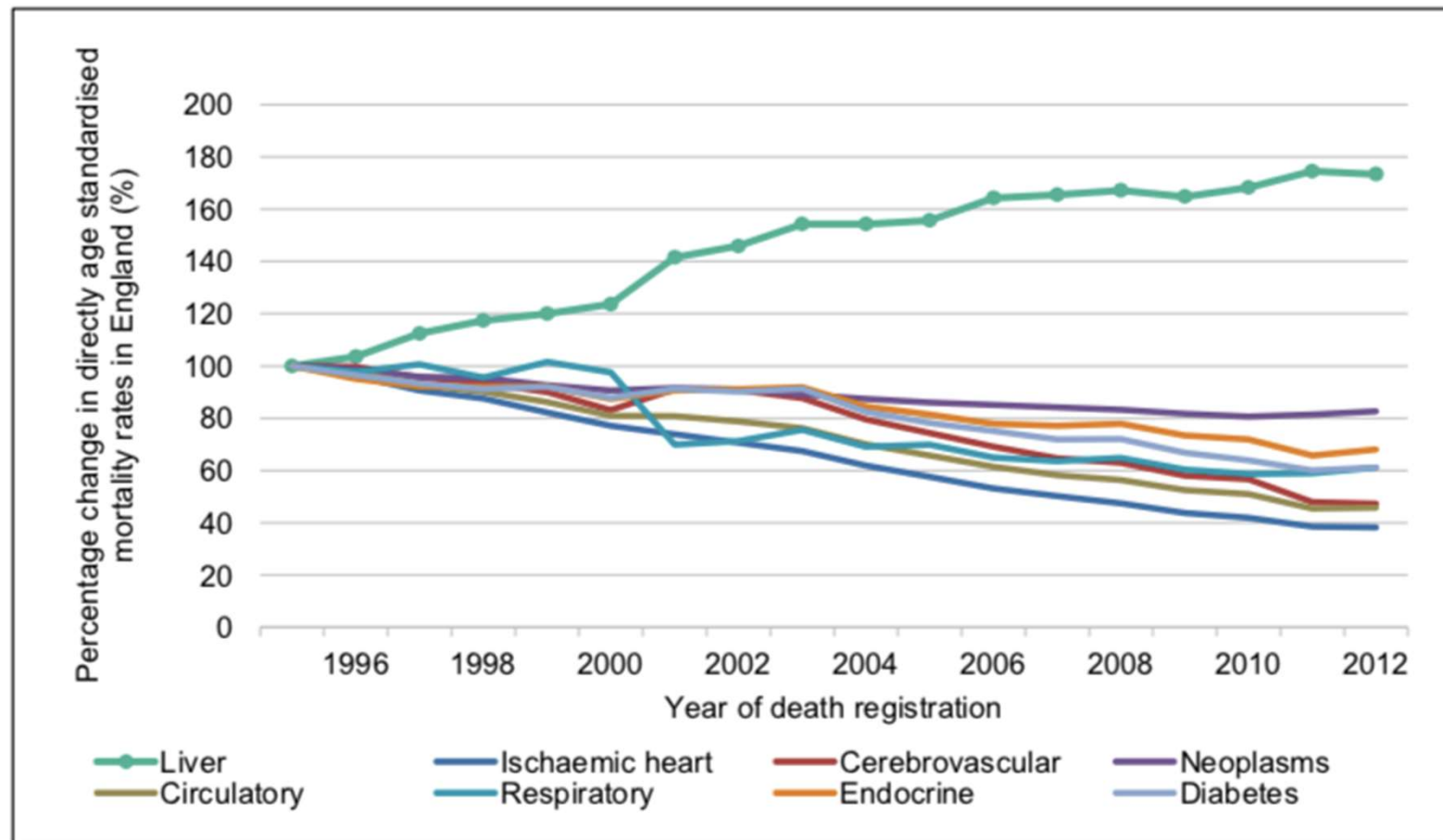
Chronic Liver Disease Identification, Risk Stratification In General Practice

Dr Sonali Kinra

GP

Why

Figure 1 - Percentage change in mortality rates, England 1995 - 2012

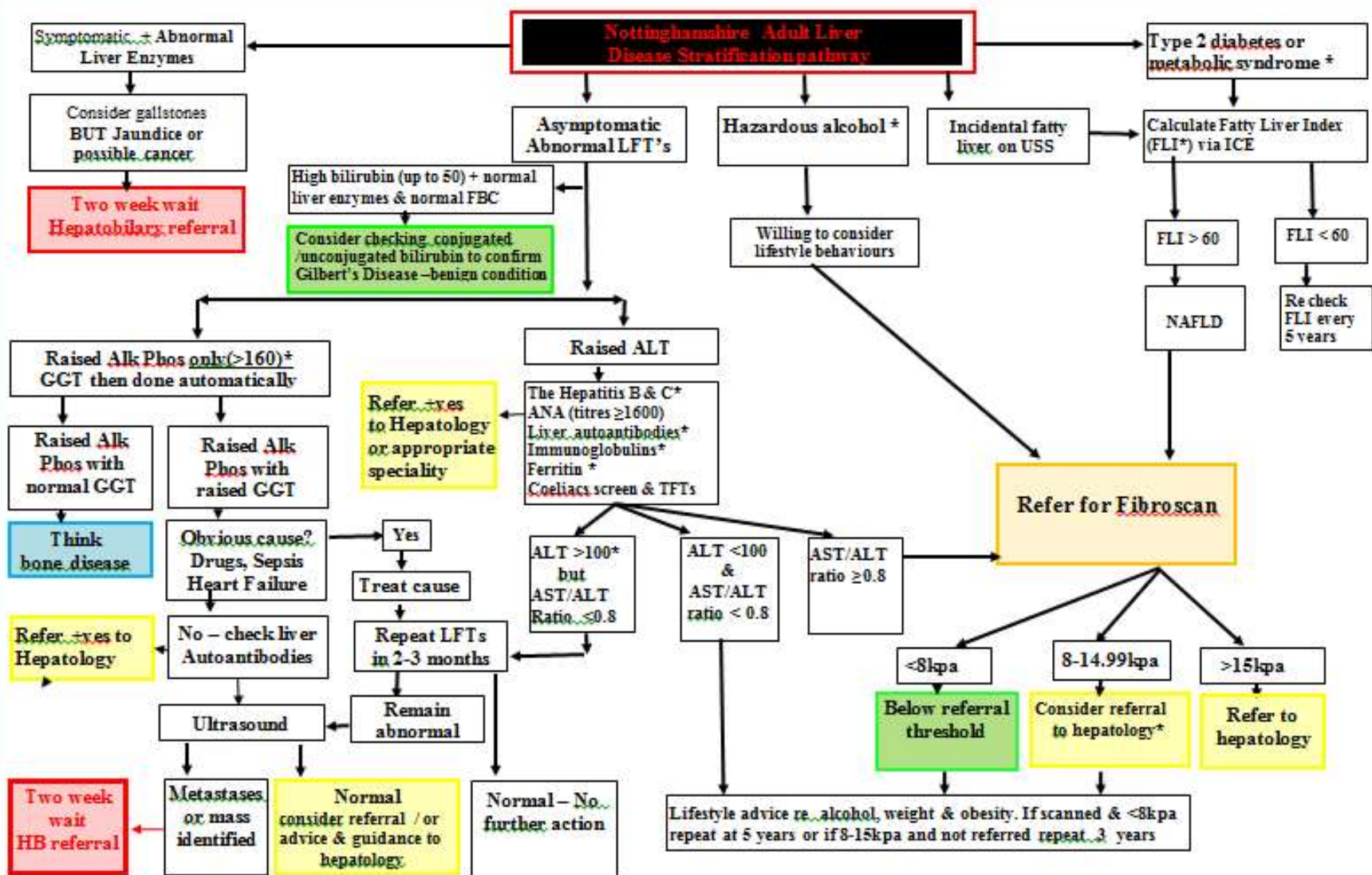


What

- Change how clinical community view liver risk and disease burden
- Educational events
- Reiteration of pathway- 26 iterations
- Friends and Family test
- GP satisfaction questionnaire

Liver Disease Stratification pathway

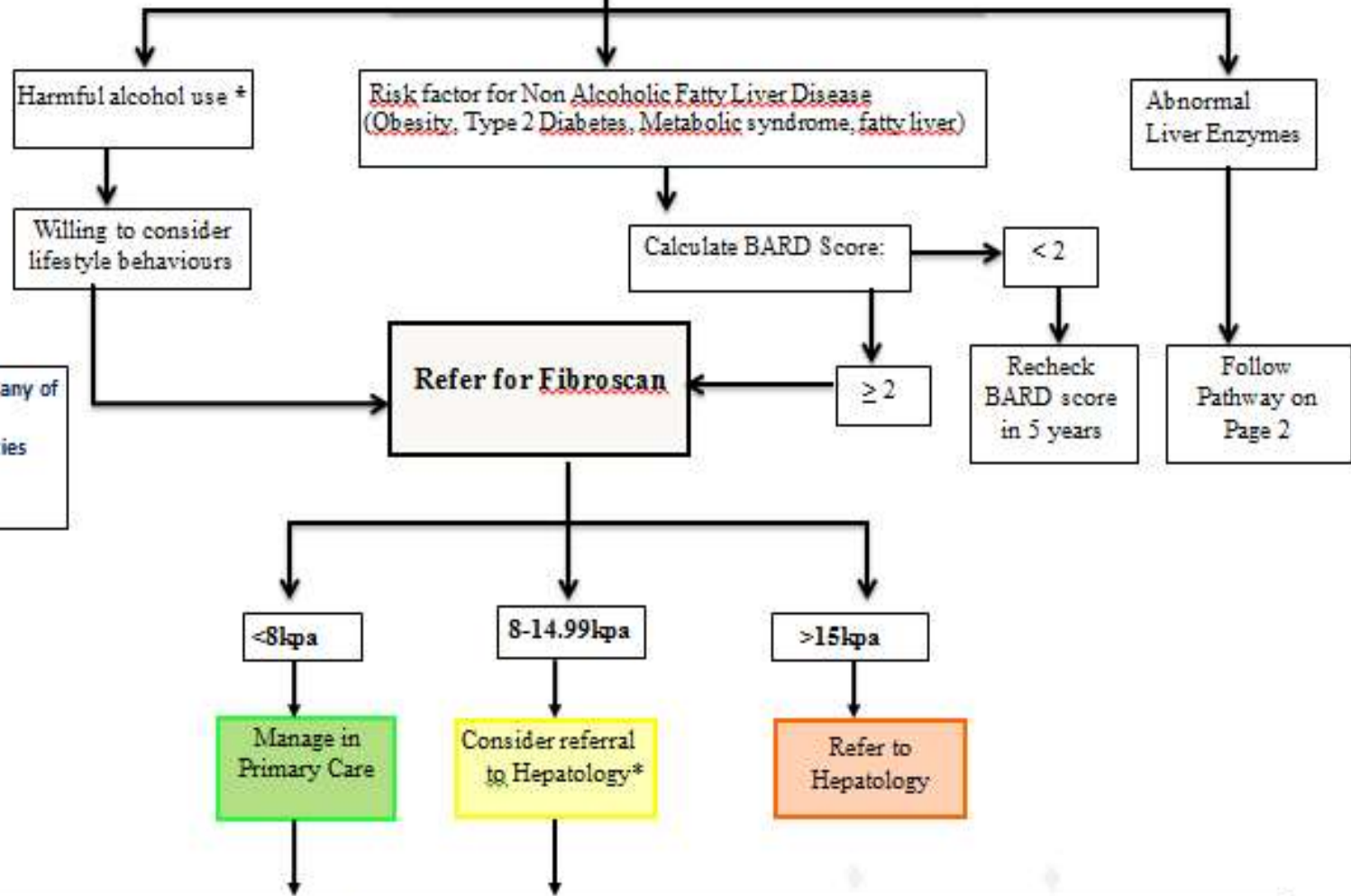
version March 2016



Version June 2019

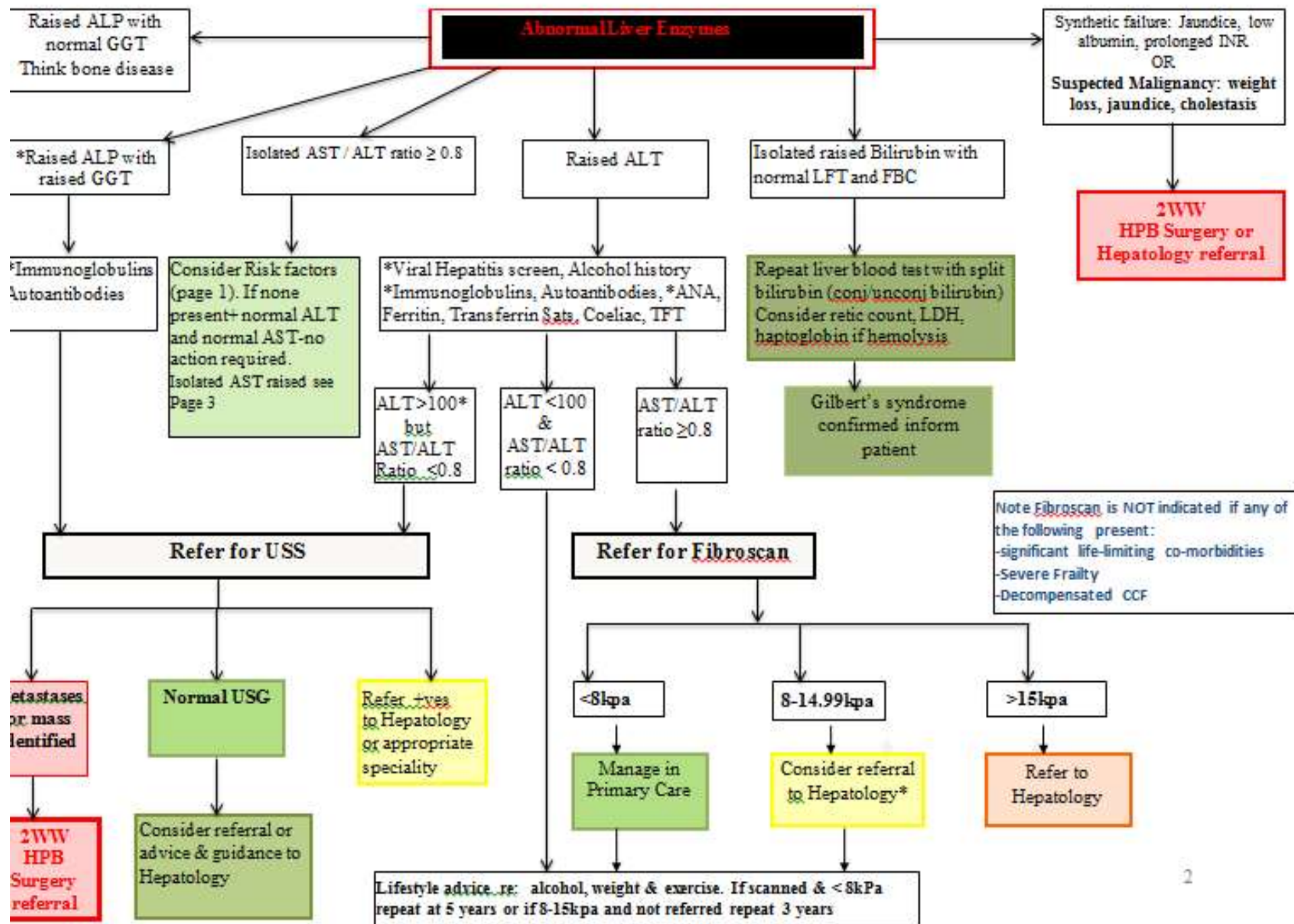
*- see notes on page 3 & 4 of guideline for more detail and information

Nottinghamshire Adult Liver Disease Risk Stratification pathway



Note Fibroscan is NOT indicated if any of the following present:
 -significant life-limiting co-morbidities
 -Severe Frailty
 -Decompensated CCF

Give lifestyle advice re: alcohol, weight & exercise.
 Not all patients with intermediate fibroscan results will require referral*
 If scanned & < 8kPa repeat at 5 years if persistent risk factors or if 8-15kpa and not referred repeat at 3 years



Lifestyle Modification

	City	County
Alcohol	https://www.nottinghamrecoverynetwork.com/	https://www.nottinghamrecoverynetwork.com/
Obesity	https://www.slimmingworld.co.uk/ https://www.ladleapp.com/courses/ladle	http://www.everyonehealth.co.uk/nottinghamshire-county-council/ Exercise for health Rushcliffe Get Going Gedling DNA Health Programme Nottingham North & East
Type 2 Diabetes	https://www.desmond-project.org.uk/people-with-diabetes/nottingham-city-diabetes-service/	https://www.nottinghamshirehealthcare.nhs.uk/desmond-programme-for-type-2-diabetes
Diabetes prevention	National Diabetes Prevention Programme- Healthier You https://www.england.nhs.uk/diabetes/diabetes-prevention/ WHUB.Ingeus-NDPP@nhs.net NHS Health Checks	National Diabetes Prevention programme-Healthier You https://www.england.nhs.uk/diabetes/diabetes-prevention/ WHUB.Ingeus-NDPP@nhs.net NHS Health Checks

Tools to embed pathway in General Practice

- Webinar
- FAQ
- Evidence Base
- Patient information leaflets
- Feedback
- Monitoring and review meetings
- Results letter standardisation
- Read codes in Primary and Secondary Care standardisation

What next

- Raising national profile- minimum pricing/QI part of QoF
- Part of NHS Health Check
- Changing guidance from LFTs to risk stratification
- System wide approach
- Focus on Prevention
- Influencing local leadership and clinical colleagues- Change management
- Bringing care closer to community- Primary Care Networks