

BASL/BSG NAFLD SIG meeting

16th May 2022

Agenda

- 1230-1245 Update on SIG progress – Dr Stuart McPherson
- 1245-1300 Promoting the SIG activities – Dr Kate Drysdale
- 1300-1315 NAFLD Quality standards – Dr Stuart McPherson
- 1315-1330 National audit of NAFLD - Dr Wenhao Li
- 1330-1345 Research update – Dr Lynsey Corless
- 1345-1400 What's happening in Early detection of liver disease – Dr Andrew Yeoman
- 1400-1420 New NICE diabetes guidelines – implications for NAFLD clinics – Prof Chris Byrne
- 1420-1430 – closing discussion

Update on SIG activities and short term objectives

- National Survey of NAFLD
- Quality standards for NAFLD published
- National Audit of NAFLD practice due to commence
- Closer working between early detection SIG and NAFLD SIG
- Continue to promote collaborative research in NAFLD
- Improve communications from the NAFLD SIG

Rationalising the diagnosis of NAFLD/MAFLD

- NAFLD/MAFLD is currently a diagnosis of exclusion
- More complicated than it needs to be for Primary care/non specialists
- In order to improve early detection of NAFLD/MAFLD a simplification of diagnosis would be advantageous
- We need a working group to develop a consensus statement
- After the meeting we will send an invitation out inviting those who would like to be part of this group

Face to face meeting

- Aim Autumn 2022
- Centralish location
- Fullish day 10am – 4pm
- Need some Pharma support

Any other ideas for activities the SIG should be doing now?

Quality Standards for the Management of NAFLD: Consensus Recommendations from the BASL/BSG NAFLD Special Interest Group.

Stuart McPherson

Consultant Hepatologist

The Newcastle upon Tyne Hospitals NHS Foundation Trust

Quality standards for the management of non-alcoholic fatty liver disease (NAFLD): consensus recommendations from the British Association for the Study of the Liver and British Society of Gastroenterology NAFLD Special Interest Group



Stuart McPherson, Matthew J Armstrong, Jeremy F Cobbold, Lynsey Corless, Quentin M Anstee, Richard J Aspinall, Stephen T Barclay, Paul N Brennan, Tessa M Cacciottolo, Robert D Goldin, Kate Hallsworth, Vanessa Hebditch, Kathryn Jack, Helen Jarvis, Jill Johnson, Wenhao Li, Dina Mansour, Mary McCallum, Ashis Mukhopadhyay, Richard Parker, Valerie Ross, Ian A Rowe, Ankur Srivastava, Prarthana Thiagarajan, Alexandra I Thompson, Jeremy Tomlinson, Emmanuel A Tsochatzis, Andrew Yeoman, William Alazawi

- Multidisciplinary team of 29 individuals
- 34 quality standard recommendations
- 11 audit standards/KPIs

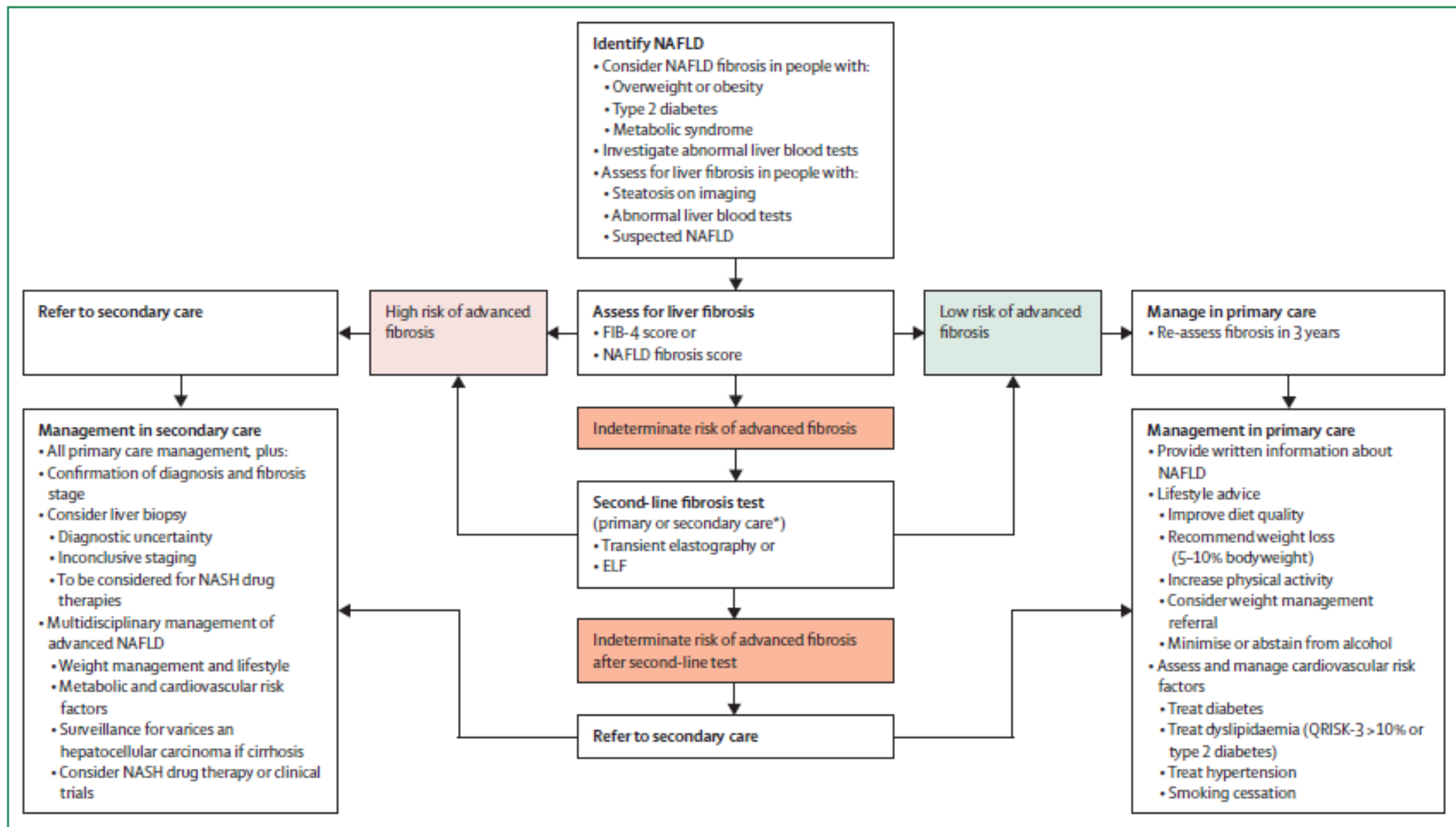


Figure: An overview of the clinical management of individuals with NAFLD in primary and secondary care

ELF=Enhanced Liver Fibrosis test. NAFLD=non-alcoholic fatty liver disease. NASH=non-alcoholic steatohepatitis. *Dependent on local clinical pathway.

How should we best promote quality standards?

- Standards and KPIs on BSG + BASL website
- Standards will form part of the BSG Quality standards framework
- Presentation at BSG Annual meeting in CSSC Guidelines session
- National Audit

- How do we promote them more widely? Primary care etc