

# Derby/ Birmingham Hepatology ATP

**IQILS**  
Accredited

The logo for IQILS Accredited, featuring the text "IQILS Accredited" in a dark red font above a stylized red checkmark shape.

**University Hospitals of  
Derby and Burton**  
NHS Foundation Trust

# Hepatology ATP post in Derby

- You will be based at the Royal Derby Hospital for the first 9 months in post, before rotating to Birmingham for the final 3 months.
- The Royal Derby Hospital is a level 2 liver centre
- Full IQILS (Improving Quality In Liver Services) accreditation since 2023



# Royal Derby Hospital

- Opened in April 2010 by HM Queen Elizabeth II
- 1159 beds
- Serves South Derbyshire and East Staffordshire
- Major teaching centre for University of Nottingham medical school with the graduate entry medical school on site
- 7 room endoscopy unit with latest HD instruments performing over 20,000 procedures annually including ERCP and EUS



# Who are we



Name	Role
Dr Andrew Austin	Consultant Hepatologist
Dr Adam Lawson	Consultant Hepatologist
Dr Nicholas Taylor	Consultant Hepatologist
Dr Claire Grant	Consultant Hepatologist
Dr Kara Rye	Consultant Hepatologist
Alison Beard	Lead liver nurse specialist
Samantha Whyld	Liver nurse specialist
Lisa Whaley	Lead viral hepatitis nurse specialist
Kim Sherwin	Viral hepatitis nurse specialist
Fiona Lowe	Lead HPB cancer nurse specialist
Rachel Taylor	HPB cancer nurse specialist
Lucy McCandless	HPB cancer nurse specialist
Jess Davies	HPB cancer nurse specialist
Lloyd Balatongan (RGN)/ Chloe Frearson	HCC surveillance team
Amie Darby	Liver ward Manager
Katie Reeve	Ward Manager, Elective Hub
Sioban Knight	Deputy General Manager
Ben Osborne	Service Coordinator
Becky Pervin	Lead Hepatology Dietitian



# Hepatology services

- Viral hepatitis service with specialist weekly clinic and quarterly clinic with GUM for coinfecting patients
- Portal hypertension service including TIPSS
- Day case paracentesis
- Liver fibrosis assessment
- Stable cirrhosis clinic
- Liver transplant clinic
- Advanced care planning clinic and MDT
- Hepato-pancreato-biliary (HPB) cancer service including weekly cancer MDT
- Pancreato-biliary benign disease service
- Alcohol care team
- Specialist dietetics service
- Research and opportunity to participate in clinical trials



# Inpatient liver services

## Specialist liver ward (ward 304)

- 29 bedded ward comprised of 5 x single gender 4 bed areas, 7 individual side rooms and one 2 bedded side room
- There is a full consultant ward round Mon, Wed, Fri with board round and consultant review of new/unwell patients on Tue and Thurs. There is a daily weekend consultant ward round

## Elective Hub

- Manages elective admissions for ERCP, Liver biopsy and daycase paracentesis.
- Venesection service for haemochromatosis

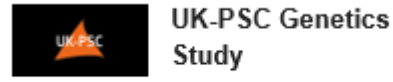


# Research

- Dr Austin is the Clinical Research Network lead for Hepatology in the East Midlands
- Research in Derby supported by 3 research nurses (2 WTE) and 2 teaching/ research fellows



OPEN to Recruitment



OPEN to Recruitment



MICAHA: Multicentre Cohort Study in Alcoholic Hepatitis

OPEN to Recruitment



OPEN to Recruitment



ESSENCE : The effect of semaglutide in subjects with non-cirrhotic non-alcoholic steatohepatitis

OPEN to Recruitment



ASEPTIC: Primary Antibiotic prophylaxis using co-trimoxazole to prevent Spontaneous bacterial Peritonitis in Cirrhosis

OPEN to Recruitment



BOPPP: Beta-blockers Or Placebo for Primary Prophylaxis of oesophageal varices

OPEN to Recruitment



A Research Study to Characterise Novel Clinical and Genetic Phenotypes, and Understand the Natural History of NAFLD

OPEN to Recruitment



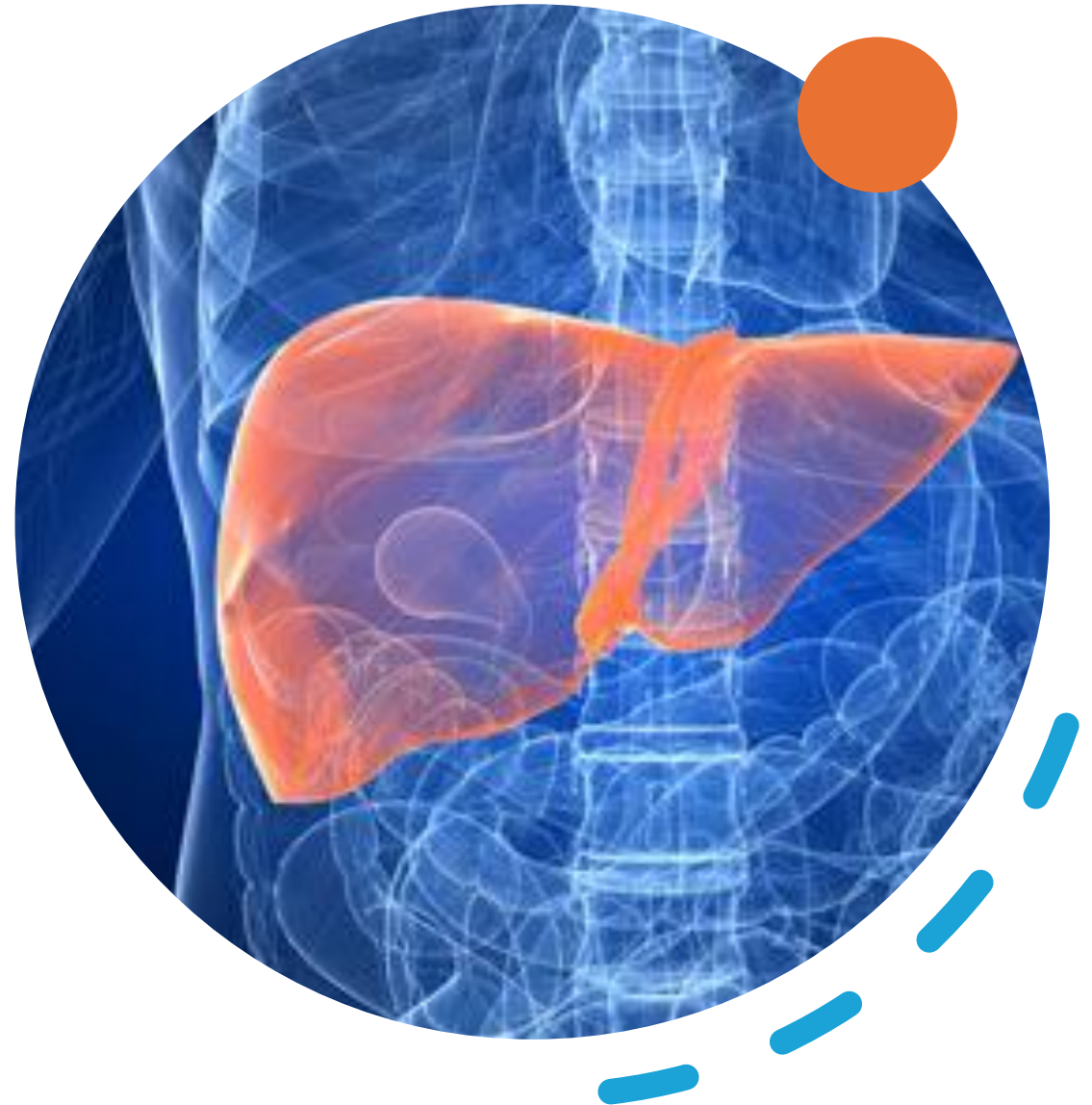
# Example Hepatology ATP Timetable

Day	Mon	Tues	Wed	Thurs	Fri
AM	<p>Liver biopsy (Dr Austin) EHub - 10.30</p> <p>Consultant WR liver ward</p>	<p>Trainee led WR liver ward</p>	<p>HEP3V (Viral hepatitis clinic)</p>	<p>Quarterly transplant clinic with Prof Armstrong from UHB</p> <p>Trainee led WR liver ward</p>	<p>Advanced liver disease MDT (alternate weeks) 08:30 NMU, Seminar Room</p> <p>HPB cancer MDT (10.15-11.30) – Cancer or unknown primary MDT follows HPB MDT</p>
Lunch		<p>Liver histology meeting (via Teams) 1<sup>st</sup> and 3<sup>rd</sup> week 12.30-13.30 TIPSS/ Transplant MDT 4<sup>th</sup> week Liver management group meeting (bimonthly)</p>	<p>Lunchtime GI meeting Lunch 12.45 Meeting 13.00-14.00</p>	<p>Medicine Grand round (PGMEC) Lunch 12.45 Meeting 13.00-14.00</p>	<p>GI Radiology meeting (Via Teams) 13.00-14:00.</p>
PM	<p>Endoscopy (varices list)</p>	<p>HEP2T (transplant clinic) – Tuesday afternoon on the 2<sup>nd</sup> Tuesday of each month</p>		<p>HEPWD (Ward discharge clinic)</p>	<p>HEP5T (transplant clinic) – Friday afternoon on the 4<sup>th</sup> Friday of each month</p>

- You will support resident doctors on liver ward and specialist nurses on eHub alongside 2 liver SpRs rotating through Hepatology for 6 months
- There is no on-call commitment during the 9 months in Derby. Trainees can choose to do adhoc OOH GIM that does not impact on Mon-Friday Hepatology ATP commitments
- There are additional clinics taking place each day, which can be an alternative to those included in the timetable above
- Endoscopy training will depend on existing experience and will be decided following discussion with the endoscopy training lead. This is not a HPB endoscopy training post.

# What we hope you will gain from this post

- A broad experience in managing inpatients and outpatients with complex liver disease
- Experience in managing complications of portal hypertension, including decisions around TIPSS
- Experience in identifying and working up patients for transplant assessment and delivery of post-transplant care
- Experience in advanced care planning for patients with advanced liver disease
- Experience of collaborative working with radiology, HPB surgery, oncology and palliative care
- Opportunity to be involved in QIP/ research





Any questions then please contact:

Dr Adam Lawson

Consultant Hepatologist, Royal Derby Hospital

East Midlands (North) Training Programme Director for Gastroenterology

[adam.lawson2@nhs.net](mailto:adam.lawson2@nhs.net)